

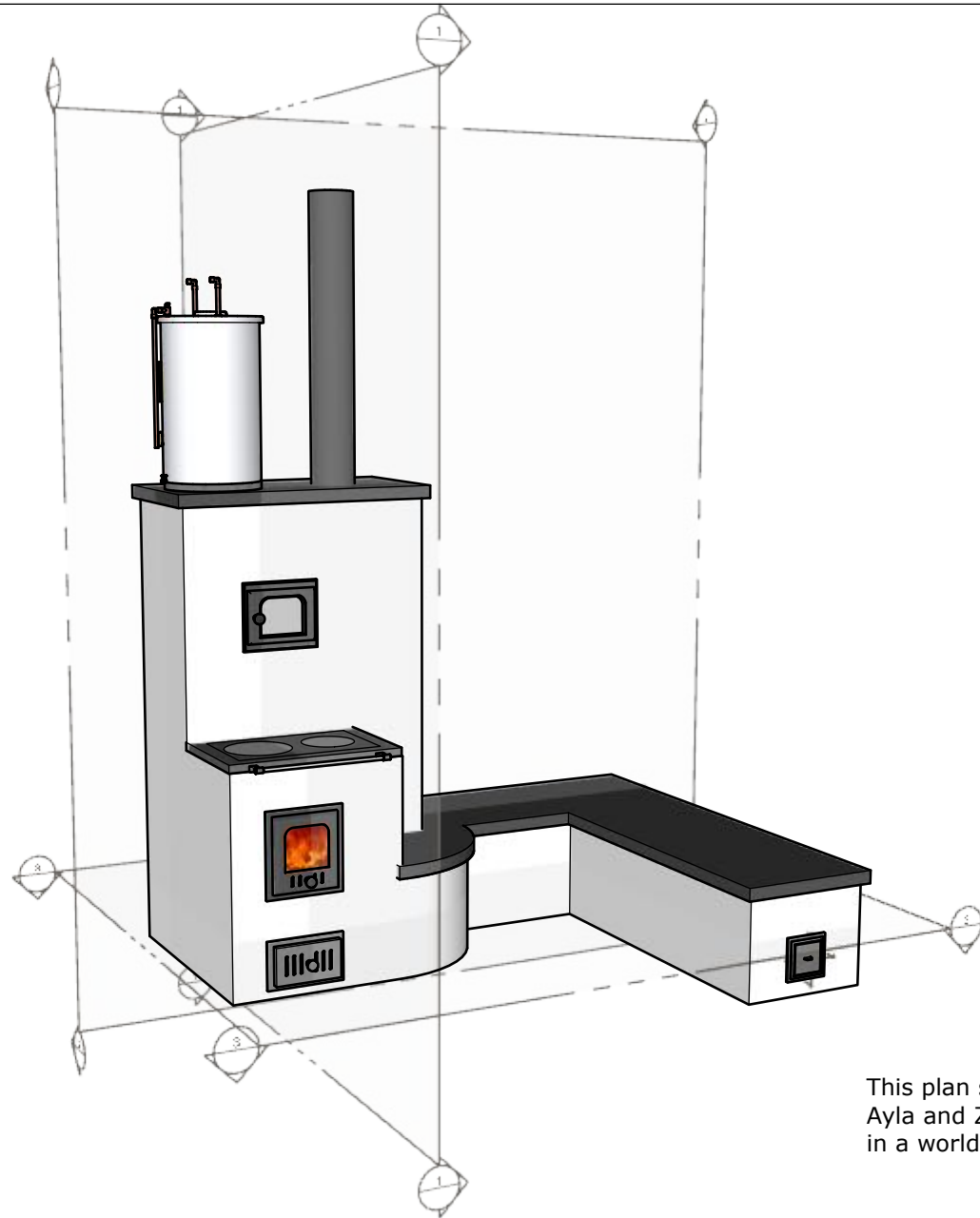


Firespeaking, LLC
89242 Fir Butte Rd.
Eugene, OR 97402
CCB# 200122

www.firespeaking.com
info@firespeaking.com
(541) 632-3028

Cookstove and Masonry Heater Hybrid Concept

Last Modified: November 15, 2025



This plan set is dedicated to my daughters
Ayla and Zoe Edleson, who I hope will live
in a world in harmony with nature.
-Max Edleson

This project was developed for the Masonry Heater Association Annual Meeting 2022.

Project Documentation & Updates: <https://www.firespeaking.com/project/cookstove-masonry-heater-hybrid/>

Disclaimer: These drawings are provided for conceptual purposes only. Individual builder responsibility and all local building codes and standards apply.

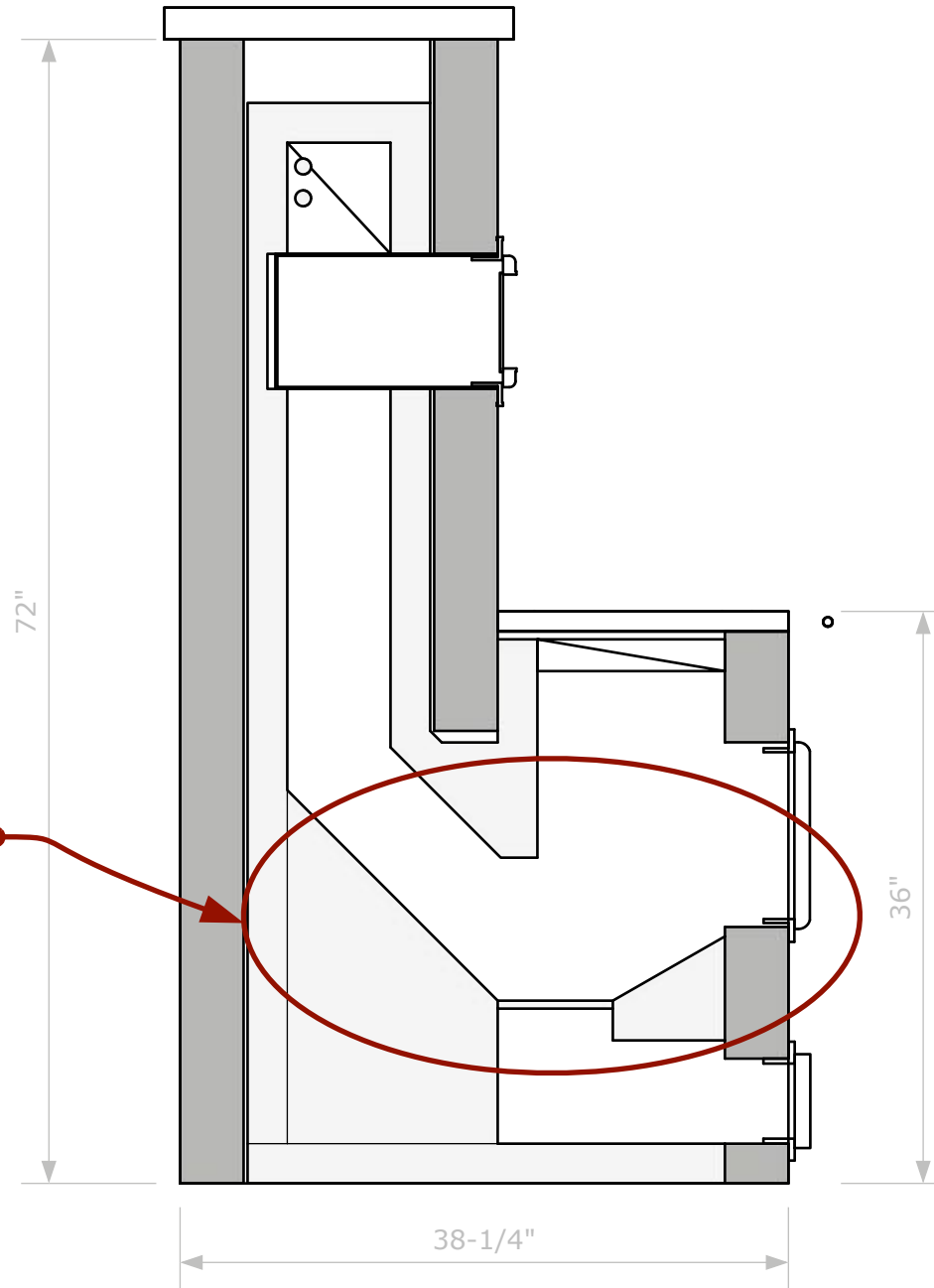


Firespeaking, LLC
89242 Fir Butte Rd.
Eugene, OR 97402
CCB# 200122

www.firespeaking.com
info@firespeaking.com
(541) 632-3028

Cookstove and Masonry Heater Hybrid Section Summary

Last Modified: November 15, 2025



Note: This area has had significant revision.
See updated Construction Docs.

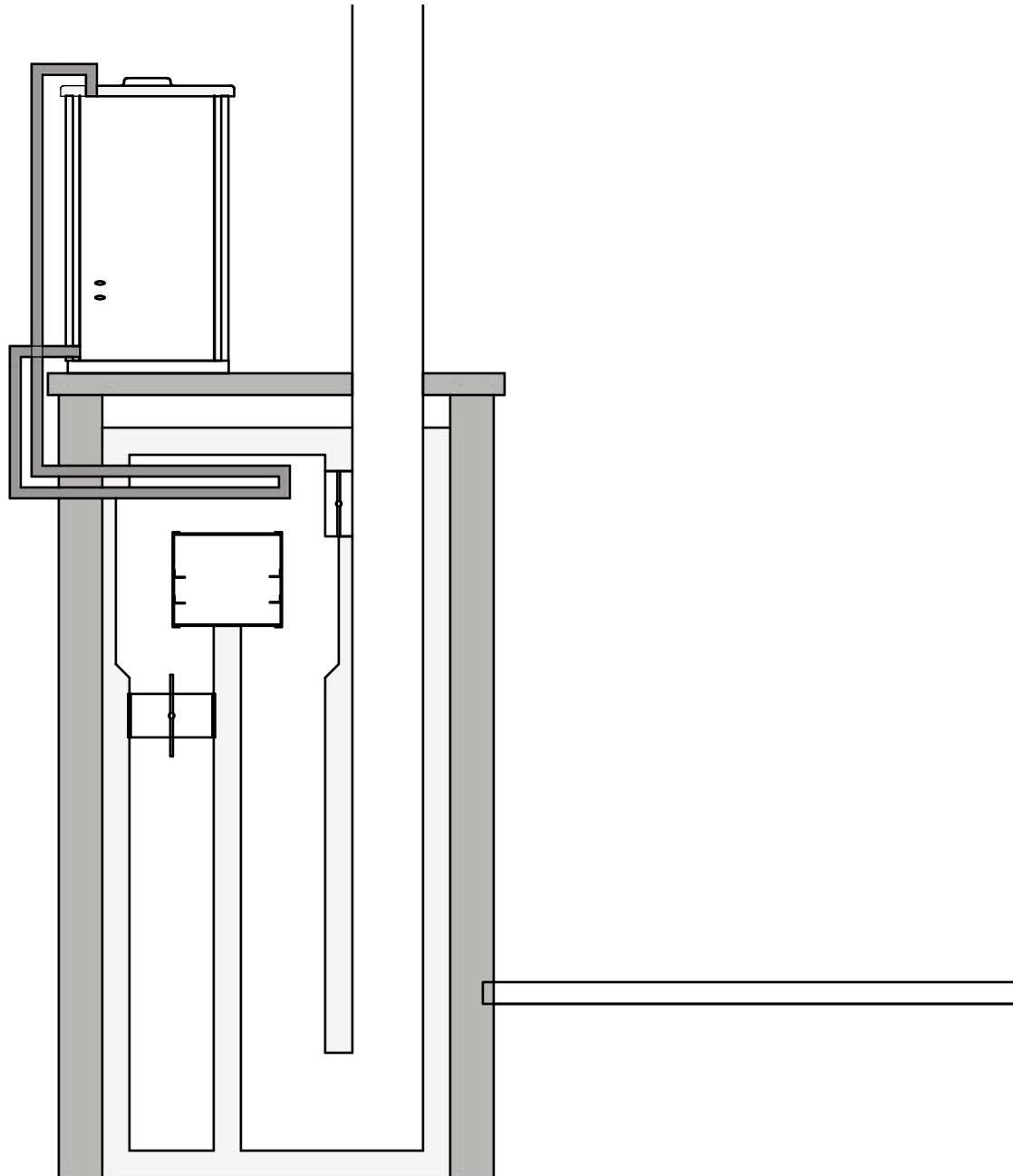


Firespeaking, LLC
89242 Fir Butte Rd.
Eugene, OR 97402
CCB# 200122

www.firespeaking.com
info@firespeaking.com
(541) 632-3028

Cookstove and Masonry Heater Hybrid Section 1 - Firebox

Last Modified: November 15, 2025

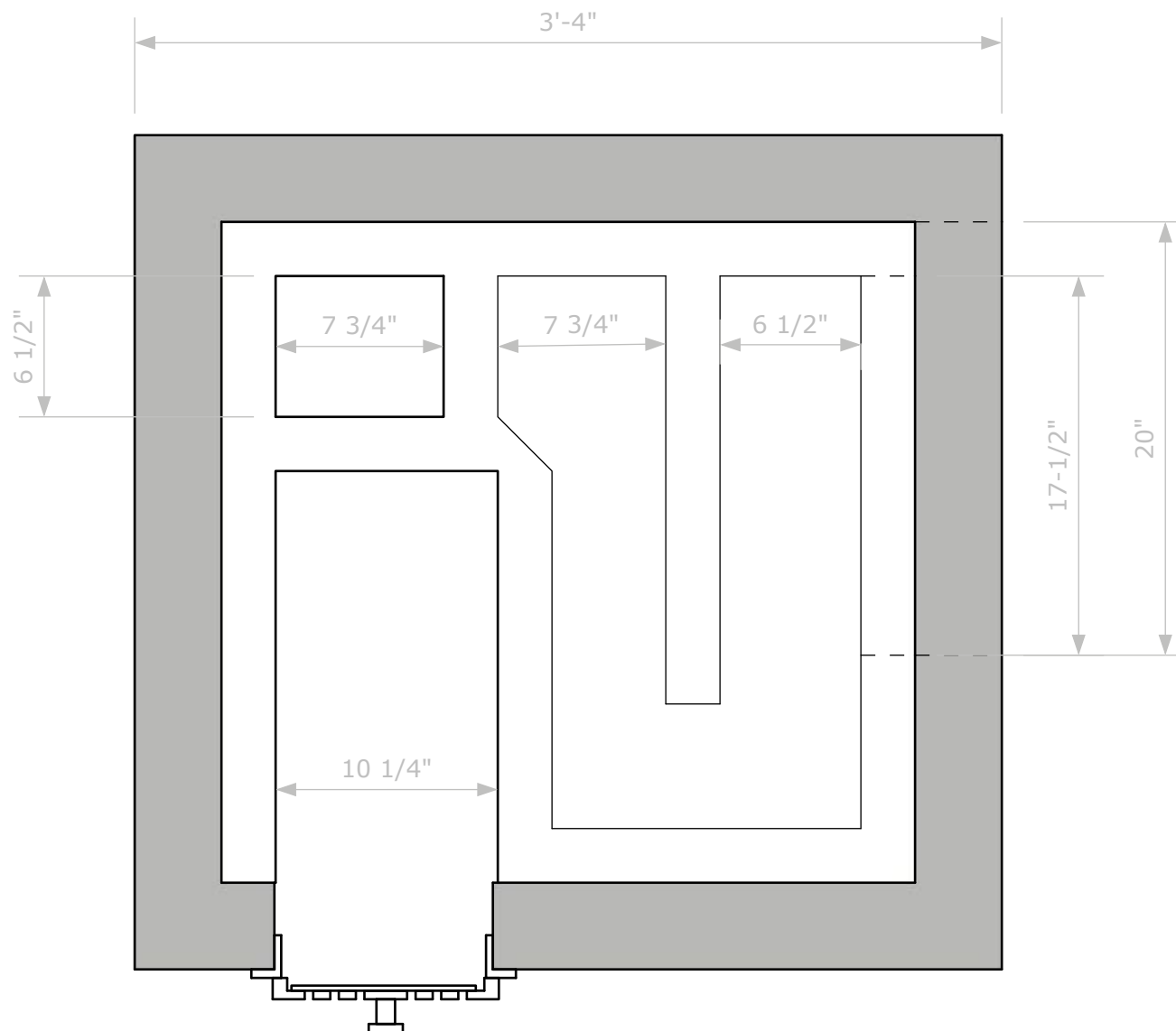


Firespeaking, LLC
89242 Fir Butte Rd.
Eugene, OR 97402
CCB# 200122

www.firespeaking.com
info@firespeaking.com
(541) 632-3028

Cookstove and Masonry Heater Hybrid Section 2 - Vertical Flow

Last Modified: November 15, 2025

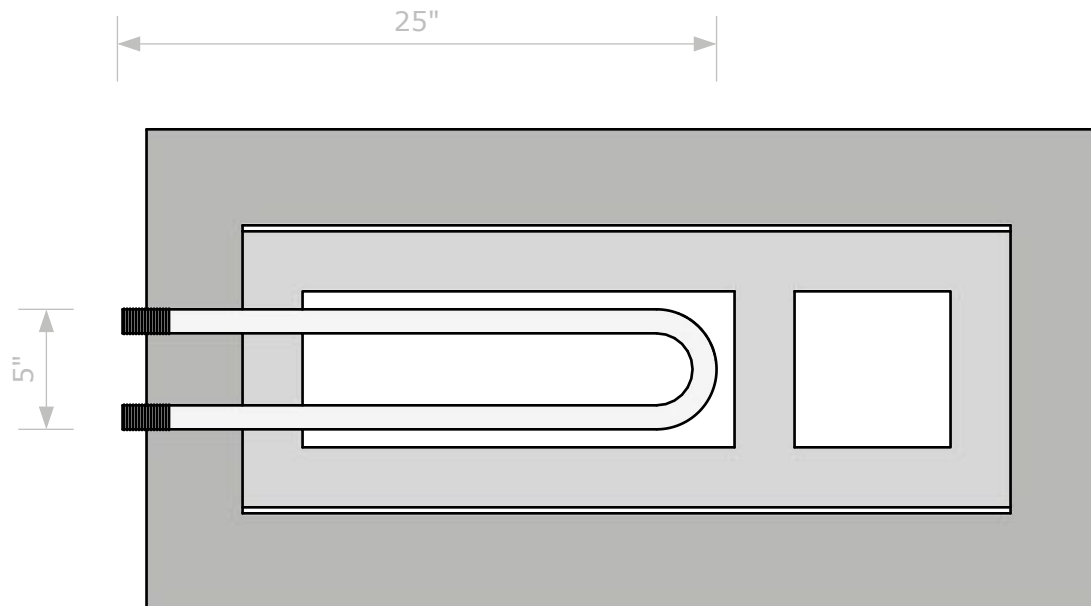


Firespeaking, LLC
89242 Fir Butte Rd.
Eugene, OR 97402
CCB# 200122

www.firespeaking.com
info@firespeaking.com
(541) 632-3028

Cookstove and Masonry Heater Hybrid Section 3 - Horizontal Flow

Last Modified: November 15, 2025



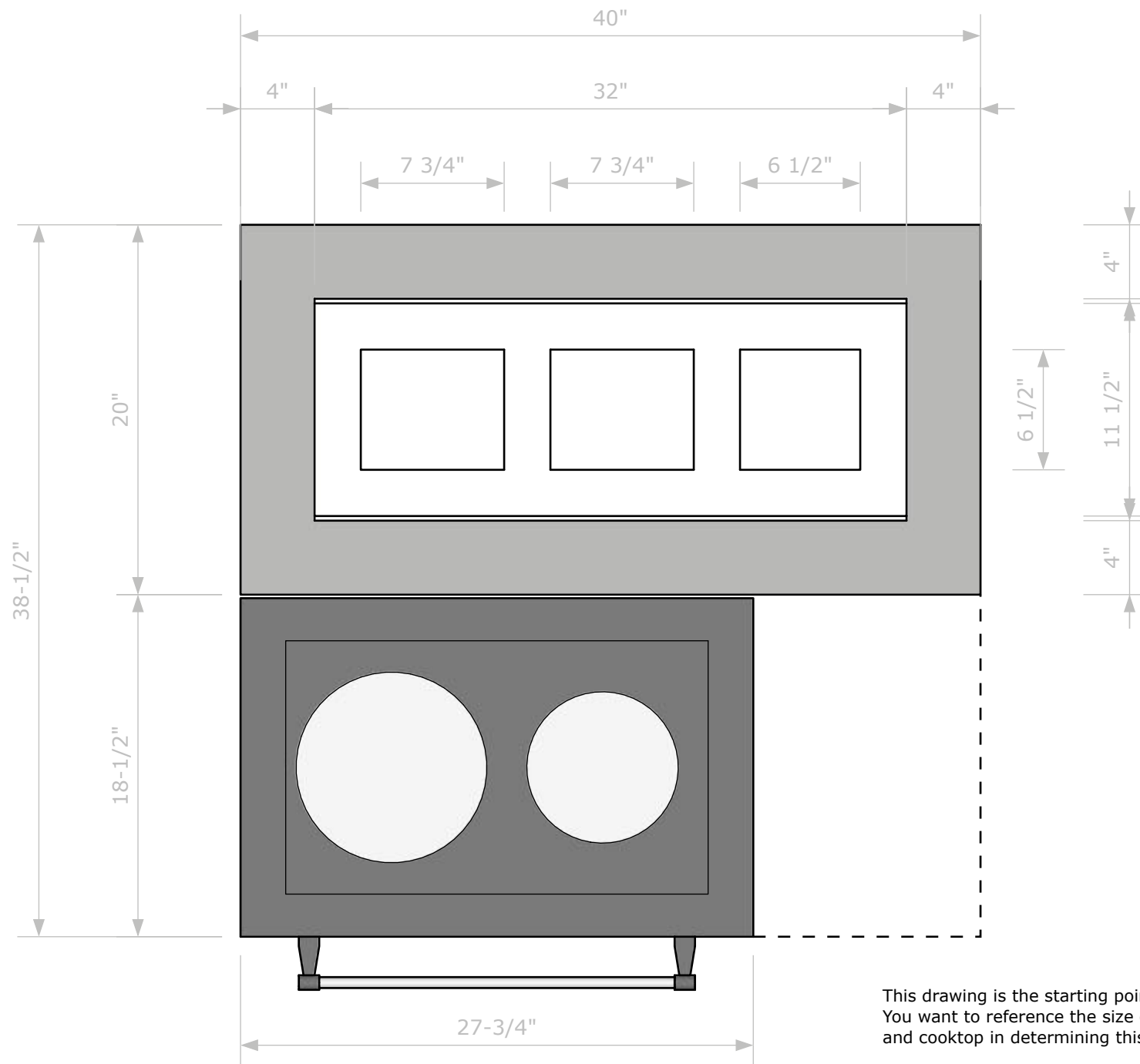
Firespeaking, LLC
89242 Fir Butte Rd.
Eugene, OR 97402
CCB# 200122

www.firespeaking.com
info@firespeaking.com
(541) 632-3028

Cookstove and Masonry Heater Hybrid

Section 5 - Hot Water Heat Exchanger

Last Modified: November 15, 2025



This drawing is the starting point for layout for the project. You want to reference the size of your face brick, firebrick, and cooktop in determining this layout.



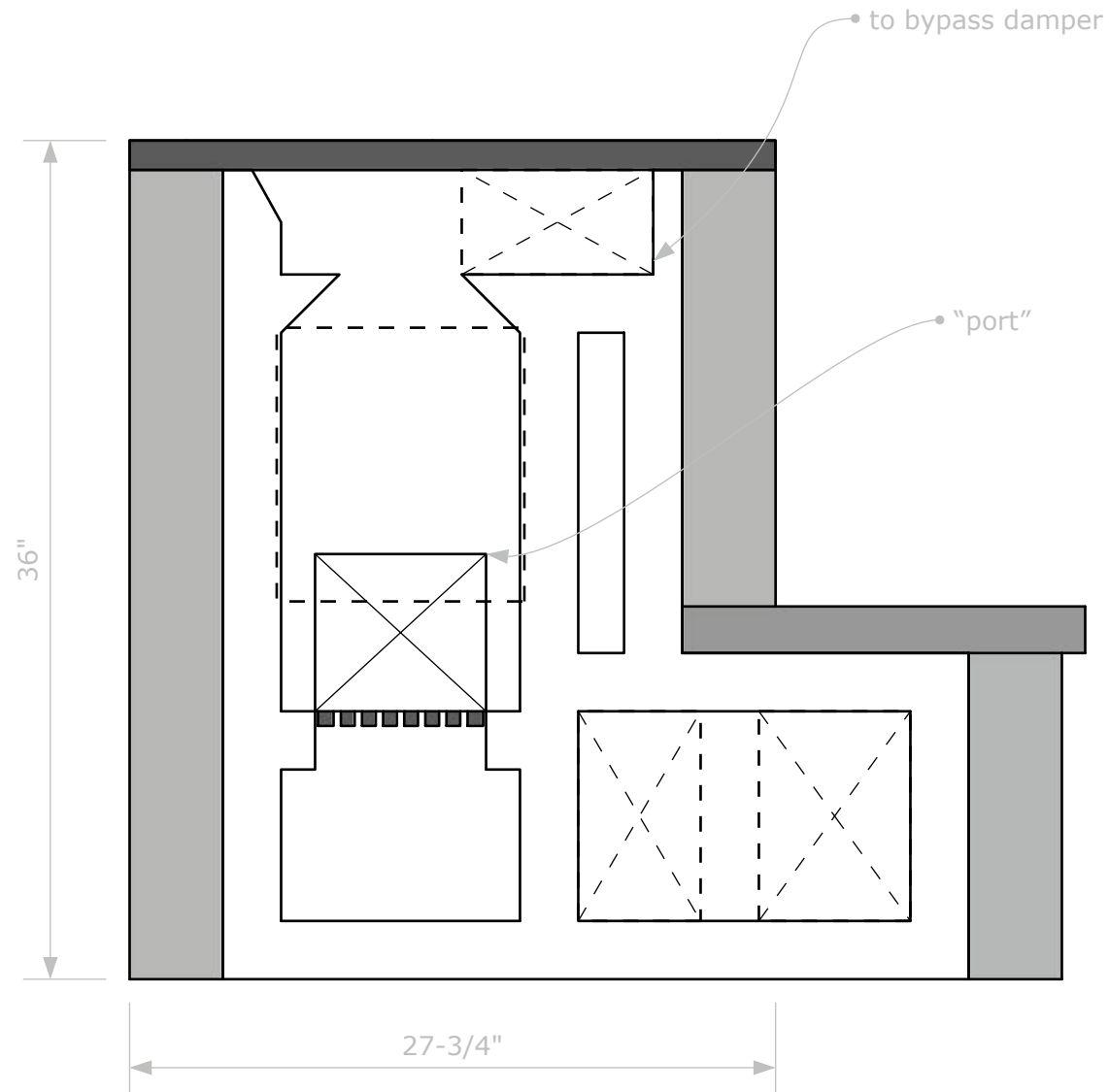
Firespeaking, LLC
89242 Fir Butte Rd.
Eugene, OR 97402
CCB# 200122

www.firespeaking.com
info@firespeaking.com
(541) 632-3028

Cookstove and Masonry Heater Hybrid

Section 4 - Plan at Cooktop

Last Modified: November 15, 2025

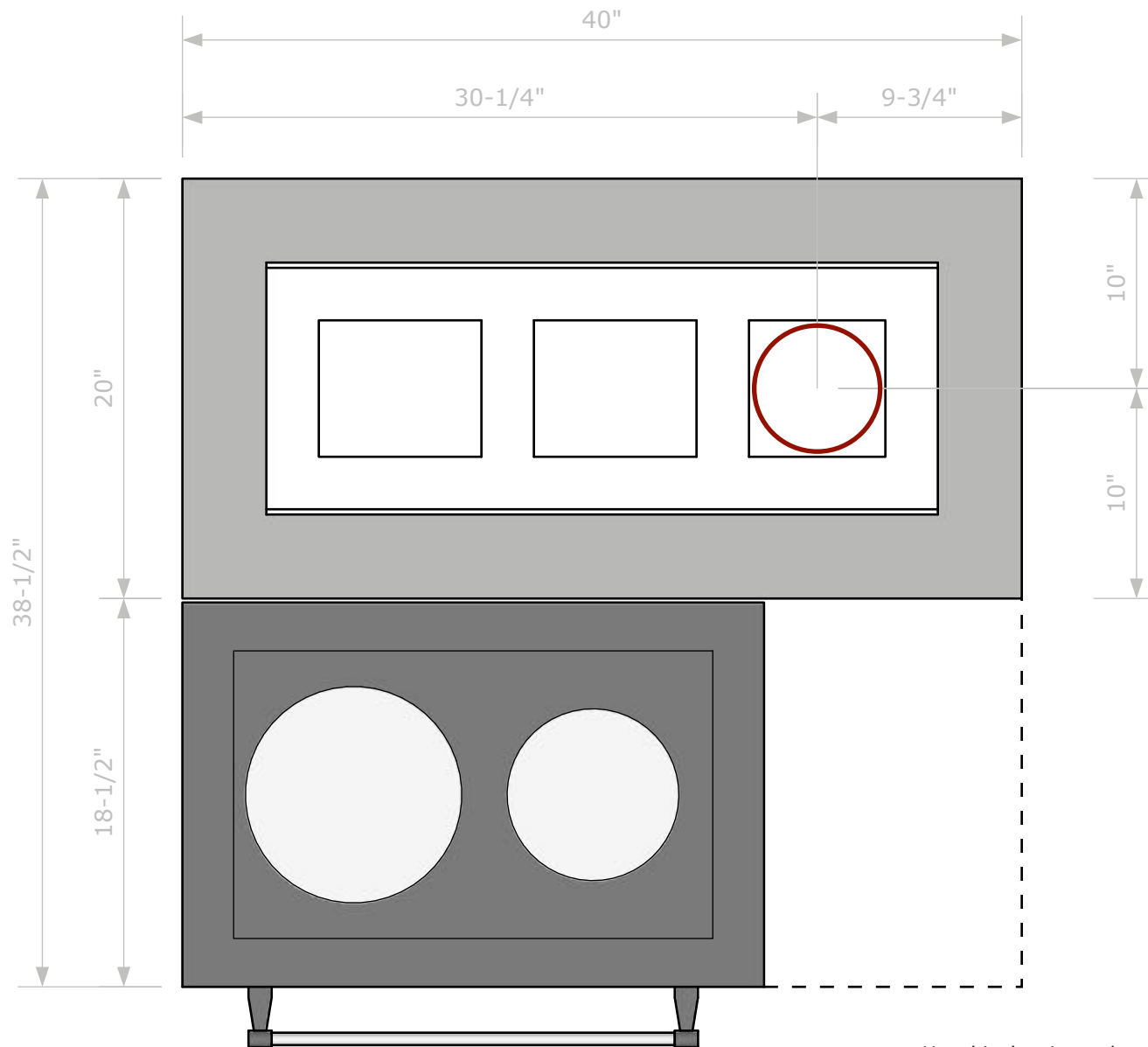


Firespeaking, LLC
89242 Fir Butte Rd.
Eugene, OR 97402
CCB# 200122

www.firespeaking.com
info@firespeaking.com
(541) 632-3028

Cookstove and Masonry Heater Hybrid Section 6 - Cookstove Sketches

Last Modified: November 15, 2025



Use this drawing to locate the chimney within the layout. This design calls for a 6" ID chimney. Note that the overall layout of the main part of this design would fit on a 40" x 40" foundation.

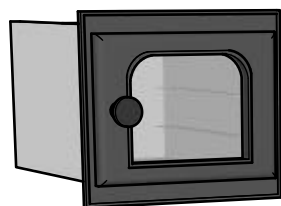


Firespeaking, LLC
89242 Fir Butte Rd.
Eugene, OR 97402
CCB# 200122

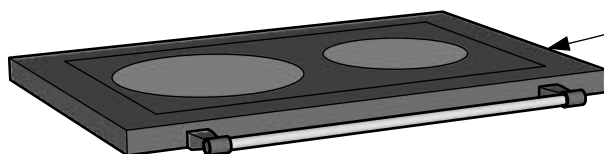
www.firespeaking.com
info@firespeaking.com
(541) 632-3028

Cookstove and Masonry Heater Hybrid Chimney Layout

Last Modified: November 15, 2025



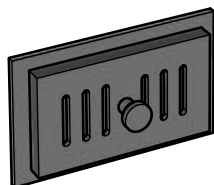
• K301 Oven & K301 Oven Enclosure



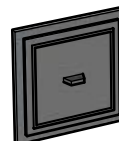
• T201 Cooktop



• K402 Firebox Door



• B104 Ash Door



• P104 Cleanout Door

(Not illustrated: FSBP66 6"x6" Pivoting Bypass Damper & R101 Grate)

Check for bundled hardware price and instant shipping quote at:
<https://www.firespeaking.com/product/cookstove-masonry-heater-hybrid-hardware/>

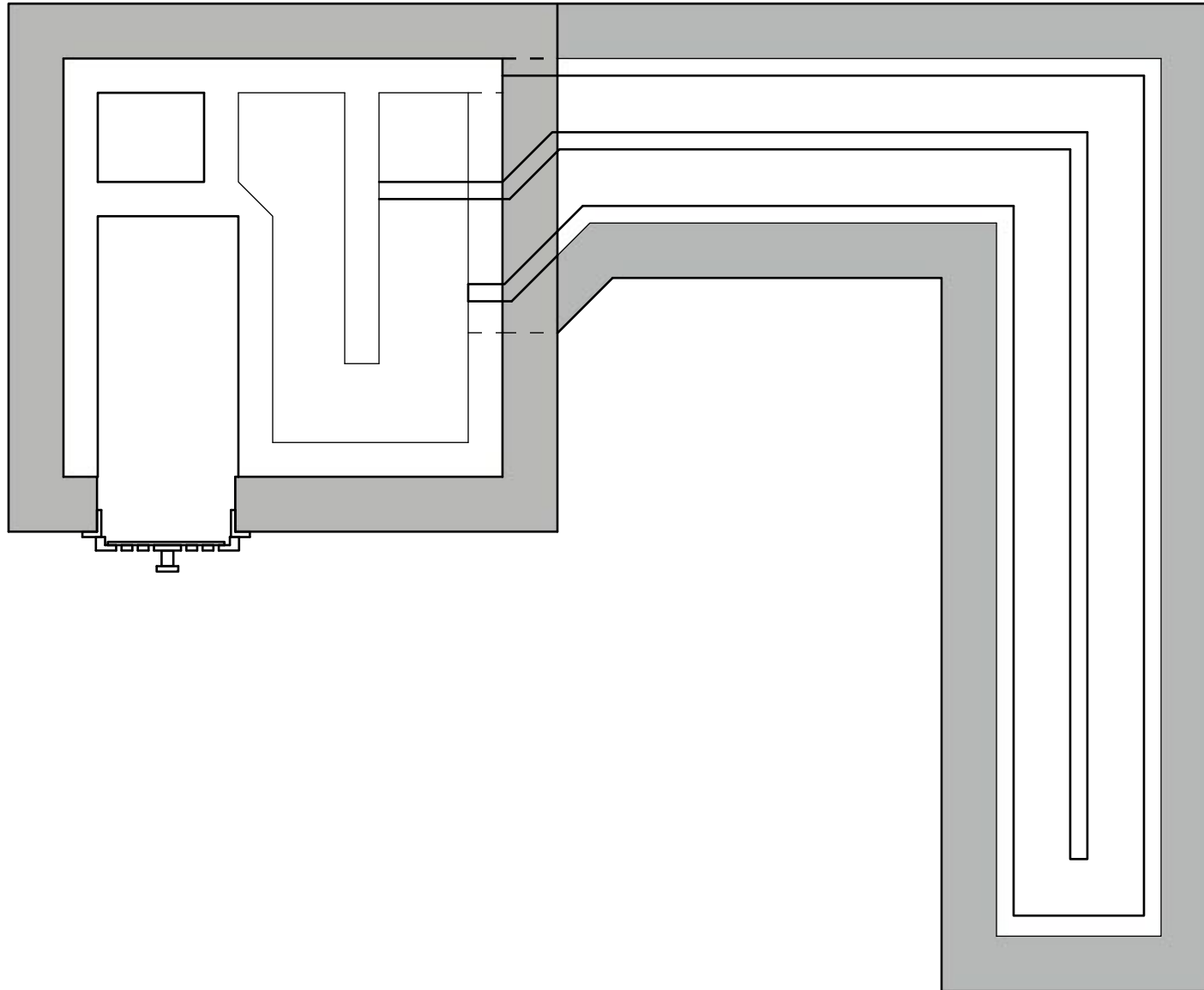


Firespeaking, LLC
89242 Fir Butte Rd.
Eugene, OR 97402
CCB# 200122

www.firespeaking.com
info@firespeaking.com
(541) 632-3028

Cookstove and Masonry Heater Hybrid Hardware Summary

Last Modified: November 15, 2025



Firespeaking, LLC
89242 Fir Butte Rd.
Eugene, OR 97402
CCB# 200122

www.firespeaking.com
info@firespeaking.com
(541) 632-3028

Cookstove and Masonry Heater Hybrid Plan for Adding Bench

Last Modified: November 15, 2025