

The base accomplishes a lot of functions:

- It lifts the firebox to a comfortable height.
- It provides for an area to collect and remove ash.
- Defines a secondary air manifold to get to the air slots in the walls, as well as provides a crossover between a potential source of outside air and room air so that either source can reach the fire as both underfire grate air and secondary air.
- A turnaround for the heat exchange channels on both sides.



**FIRESPEAKING**  
MASONRY HEATERS • WOOD-FIRED OVENS

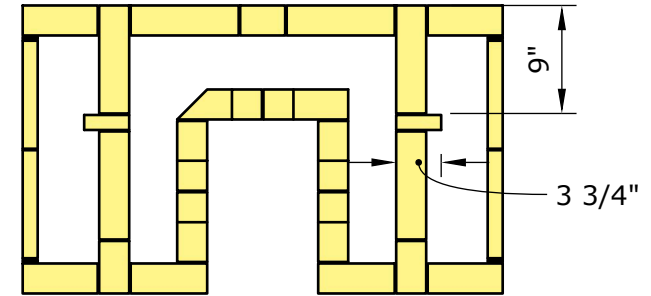
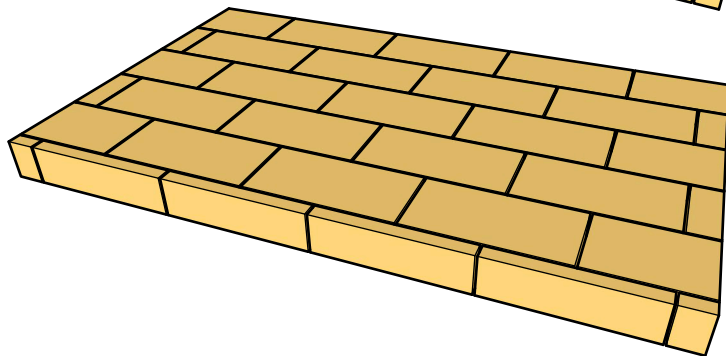
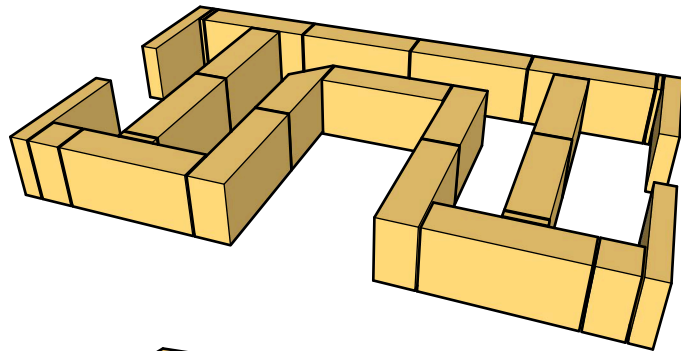
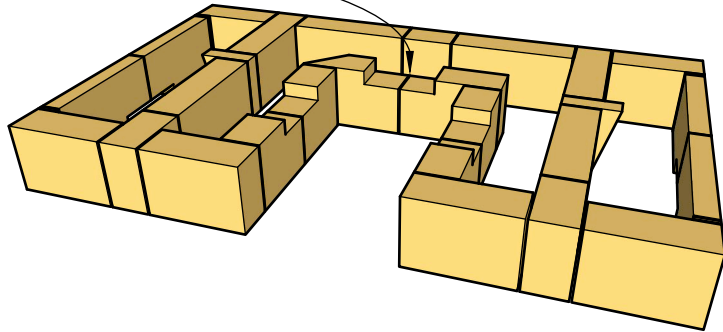
Eugene, OR - (541) 632-3028 - [www.firespeaking.com](http://www.firespeaking.com) - [info@firespeaking.com](mailto:info@firespeaking.com)

## Base for Basic 5-Run Overview

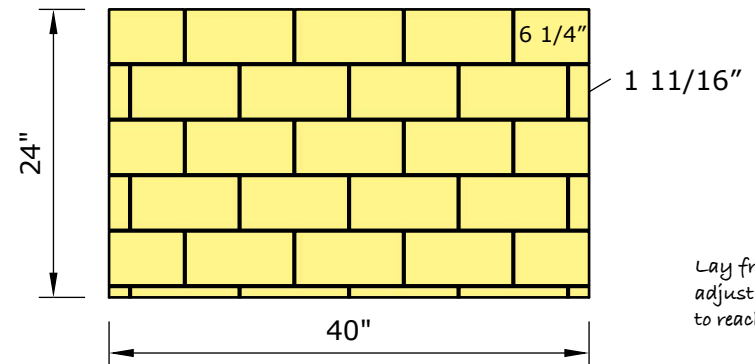
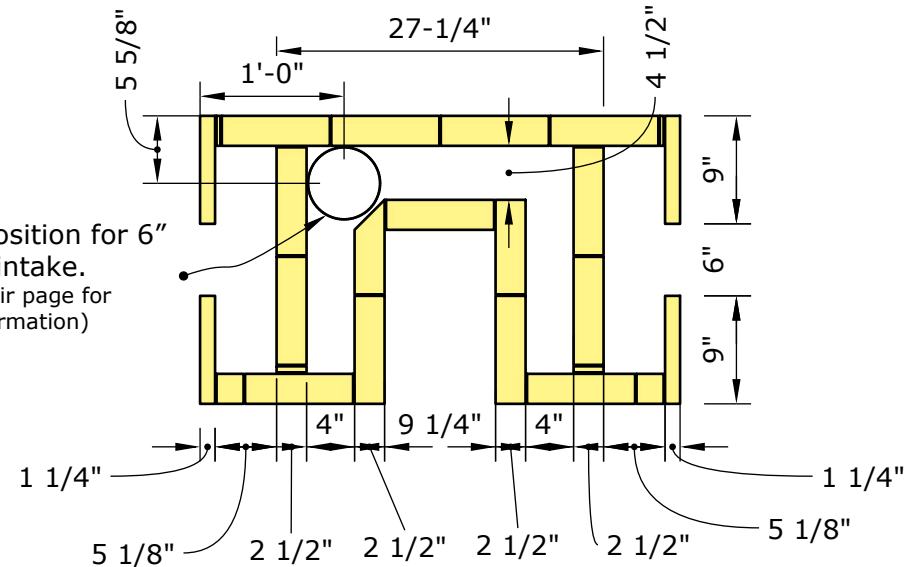
Last Modified: September 16, 2025

©2025 Firespeaking

- 1" x 5" Air Slots for Dual Source Interchange between room and outside air



Proposed position for 6" outside air intake.  
(See outside air page for additional information)



Lay from back and  
adjust measurement  
to reach 24" depth.



**FIRESPEAKING**  
MASONRY HEATERS • WOOD-FIRED OVENS

Eugene, OR - (541) 632-3028 - [www.firespeaking.com](http://www.firespeaking.com) - [info@firespeaking.com](mailto:info@firespeaking.com)

## Base for Basic 5-Run Dimensions

Last Modified: September 16, 2025

©2025 Firespeaking